

System One REMstar Pro and REMstar Auto

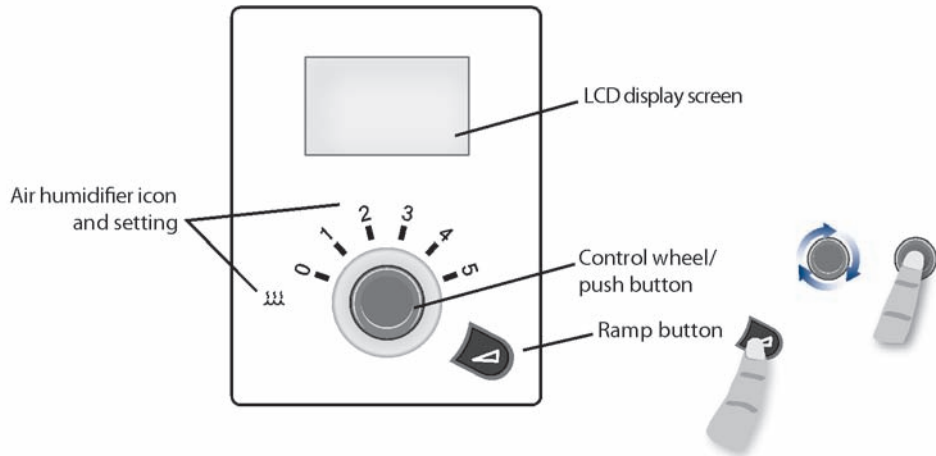


Pocket Guide

PHILIPS
RESPIRONICS

This pocket guide does not replace the full manual. Additional important information can be found in the manuals of the respective devices.

Controls



Patient menu

Therapy	Flex
Info	Setup

Therapy



Starts the therapy by pressing on the control wheel. Basic position of the menu.

Note: If the patient inadvertently turns the menu button, System One will automatically return to the “Therapy” patient menu after 10 sec. without activity. The patient can start the therapy as usual by pressing the control wheel.



R_x

Screen display of “SD card inserted, prescription accepted”.



~~R_x~~

Screen display of “SD card inserted, prescription rejected”.



Screen display of “SD card inserted incorrectly”.



Screen display of “SD card full”.



Screen display of “SD card removed”.

Patient menu

Therapy	Flex
Info	Setup

Flex

Settings for Flex and Flex-Demo modes.



Therapy	Flex
Info	Setup

Info

Inquiry regarding therapy hours and history of important therapy parameters (if released by the clinical supervisor for the patient).

Therapy	Flex
Info	Setup

Setup



Additional therapy settings released for the patient.

Therapy	Flex
Info	Setup

Query of the therapy hours

On the device display, the therapy hours can be read by the patient as follows:

From the Patient menu, select Info.



Back
Status
Phone-In
Therapy hours

From the Info menu, select the Phone-in menu item.



Back
Therapy hours
Blower... 0.0
Days > 4

On the Phone-in menu, the therapy hours are displayed.



Mask test

Only for System One REMstar Auto in Auto CPAP mode.

The mask test allows the patient to check the correct fit of the mask by himself/herself before starting the therapy. [This function must be authorized for the patient by the clinical supervisor.](#)

If the ramp button is pressed (see control panel) when the device is still not producing any therapy pressure, the mask test begins. The device produces a test pressure for 40 seconds. At the end of the test, a check mark on the display indicates the correct fit of the mask. A cross indicates that the fit of the mask still can be improved.



Good mask fit



Mask fit can be improved

Setup – Settings

After selecting Setup on the clinical menu, you receive the following setup options:

Mode	C-Check	CPAP			REMstar Pro
	A-trial	C-Check	CPAP	Auto	REMstar Auto

CPAP pressure	4.0 - 20.0	
C-Check pressure		4-20 cm H ₂ O

Only for REMstar Auto

If A-trial selected Min days	3.0 - 30.0	
Auto max	4.0 - 20.0	Maximum therapy pressure (up to 20 cm H ₂ O)
Auto min	4.0 - 20.0	Minimum therapy pressure

	No Flex	C-Flex	C-Flex +	
Flex type	No Flex	C-Flex	A-Flex	C-Flex +
				REMstar Pro REMstar Auto
Flex		1	2	3
				Flex stage configurable
Flex lock		ON	OFF	
				"On" locks the setting of the Flex stage on the Setup patient menu.
Tubing type lock		ON	OFF	
				"On" locks the setting of the tube type on the Setup patient menu.
Tube type		15	22	
				Set the tube type used: 15 mm or 22 mm (default). The respective tube resistance is compensated by the device.

System One
resistance control

0 X1 X2 X3 X4 X5

Setting to compensate for the mask resistance for special masks. 0 for standard masks.

Lock System One

ON OFF

“On” locks the resistance control on the Setup patient menu.

Ramp time

0:00 - 0:45

Duration of sleep ramp from 0 (off) to 45 minutes.
Not displayed if CPAP is only set to 4 cm H₂O.

Ramp start

4.0 - (auto min/CPAP pres)

Pressure at which the sleep ramp starts.
Not displayed if the ramp duration is 0.

Silent mode

ON OFF

Silent mode by default.
During therapy start and stop, the device will not emit an alarm (beep).

Only when the humidifier is connected

System One humidification	ON OFF	"On" for automatic control of humidifier performance via air humidity and room temperature. "Off" for constant heating performance.
Humidifier	0 1 2 3 4 5	Defines the setting of the humidifier at the start of therapy. Stages C1 to C5 (classic mode) for constant heating performance.
If heated tube connected Heated tube humidification	ON OFF	"On" for automatic control of humidifier performance via air humidity and room temperature in a cold environment.
Humidity level	1 2 3	Defines the setting of the humidifier at the start of therapy.
Tube temperature	0 1 2 3 4 5	Defines the setting of the heated tube at the start of therapy.

Auto on	<input type="checkbox"/> ON <input type="checkbox"/> OFF	Therapy device switches on automatically by breathing on the device.
Auto off	<input type="checkbox"/> ON <input type="checkbox"/> OFF	Therapy device switches off automatically after a certain time if the mask is removed.
Mask alert	<input type="checkbox"/> ON <input type="checkbox"/> OFF	In the event of a large leak, mask alert on the display and an audible alert signal.

Only with REMstar Auto

Opti-Start	<input type="checkbox"/> ON <input type="checkbox"/> OFF	“On” allows the patient to start at a more optimal starting pressure by reducing the likelihood of residual events at the beginning of the night. Opti-Start is calculated every 30 hours as a portion of the 90% pressure.
Mask fit check	<input type="checkbox"/> ON <input type="checkbox"/> OFF	“On” allows the patient to check the fit of the mask prior to therapy by measuring the leak.
Ramp backlight	<input type="checkbox"/> ON <input type="checkbox"/> OFF	“On”: The ramp button and humidifier stages are dimly illuminated during therapy.
Show AHI/leak/PB	<input type="checkbox"/> ON <input type="checkbox"/> OFF	“On” permits an inquiry of AHI/Leak/PB by the patient from the Info menu.

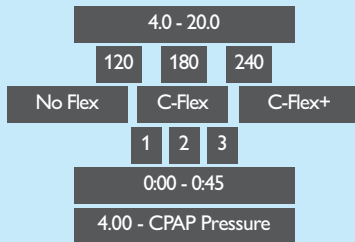
Only with REMstar Auto

Split night

ON OFF

“On” activates the split night mode: In the first half of the night, CPAP therapy is given, while Auto CPAP therapy is given in the second half of the night.

Split night start



Pressure of the CPAP therapy during Split Night (between Auto min and Auto max). Duration of the CPAP therapy until the change to Auto CPAP: 120, 180 or 240 minutes. Flex type, Flex setting, ramp time and ramp start.

Language



English, German, French, Spanish, Italian, Brazilian Portuguese, Denmark, Finnish, Norwegian, Swedish. 0 for icons.

Back

Back

Return to main menu for clinical users.

Clinical menu

Therapy	Flex
Info	Setup

Configure therapy parameters

Switch to the clinical menu to configure the therapy parameters:

On the patient menu, select the Setup menu item (dark background).

Then **hold down the knob** and **the ramp button** simultaneously for 5 seconds and wait until the double beep is heard.

Exit	Reminder
Info	Setup

These settings are available for selection from the clinical menu.



**Philips Healthcare is part of
Royal Philips Electronics**

How to reach us

www.philips.com/healthcare
healthcare@philips.com

Asia

+49 7031 463 2254

Europe, Middle East, Africa

+49 7031 463 2254

Latin America

+55 11 2125 0744

North America

+1 425 487 7000

800 285 5585 (toll free, US only)

Philips Respironics
1010 Murry Ridge Lane
Murrysville, PA 15668

Customer Service
+1 724 387 4000
800 345 6443 (toll free, US only)

Philips Respironics International
Headquarters
+33 1 47 28 30 82

Philips Respironics Asia Pacific
+65 6882 5282

Philips Respironics Australia
+61 (2) 9947 0440
1300 766 488 (toll free, Australia only)

Philips Respironics China
+86 400 828 6665
+86 800 828 6665

Philips Respironics Deutschland
+49 8152 93 06 0

Philips Respironics France
+33 2 51 89 36 00

Philips Respironics Italy
+39 039 203 1

Philips Respironics Sweden
+46 8 120 45 900

Philips Respironics Switzerland
+41 6 27 45 17 50

Philips Respironics United Kingdom
+44 800 1300 845

www.philips.com/respironics



© 2013 Koninklijke Philips Electronics N.V. All rights are reserved.

Philips Healthcare reserves the right to make changes in specifications and/or to discontinue any product at any time without notice or obligation and will not be liable for any consequences resulting from the use of this publication.

Note: These brief instructions do not replace the complete provider and user manual included with the device.

CAUTION: US federal law restricts these devices to sale by or on the order of a physician.

Broudy NB 1/16/13 MCI 4104129 PN 1084430